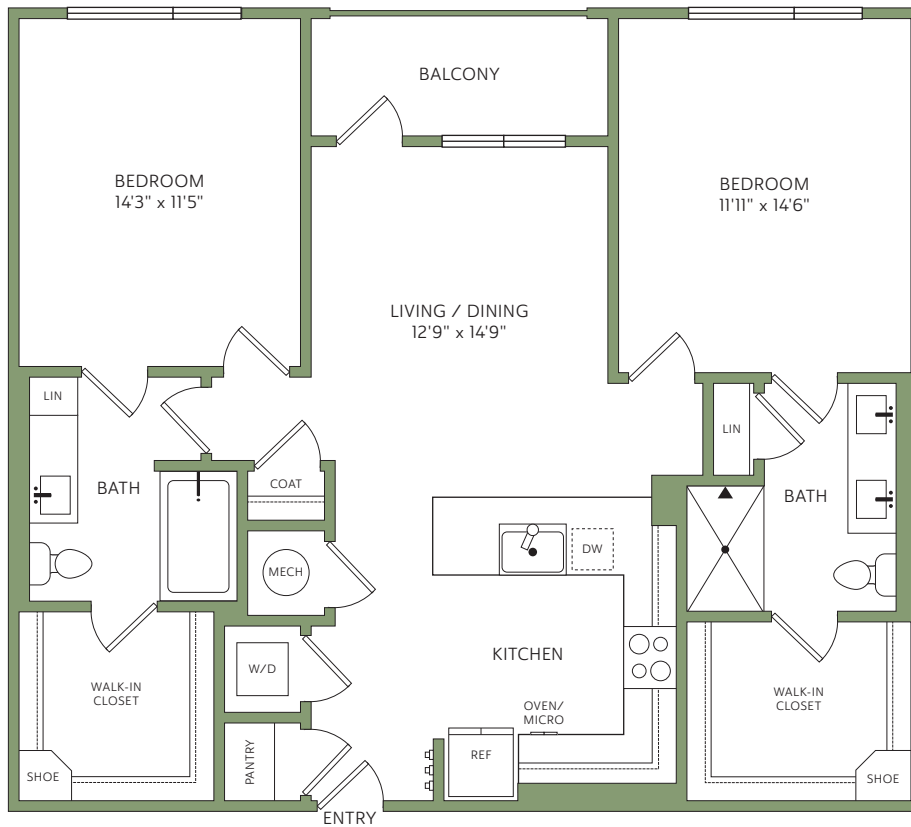




B3, B4

2 Bed | 2 Bath | 1080-1093 SF



RYE CENTRAL PARK
rye

P 970-744-5884

2999 WILLOW ST | DENVER, CO 80238

RyeCentralPark.com



Floorplans are artist's renderings. All dimensions are approximate. Actual product and specifications may vary in dimensions or detail. Please see a representative for details.